



# EVERGLADE SCHOOL NEWSLETTER

64 Everglade Drive, Manukau 2105  
Phone: (09) 262 0244 • Fax: (09) 262 3791  
E-mail: [office@everglade.school.nz](mailto:office@everglade.school.nz)



Wednesday 17 March 2021

05/2021

Dear Parents/Caregivers,

With the moving between Levels One, Two and Three over recent weeks, one of the big casualties was our series of Parent Orientation Sessions.

These are a big deal for us, as they provide the opportunity to share with you about how things work in your child's class, and to answer any questions you may have about the year ahead.

The Orientation Sessions need to be held early in the piece or they lose their value. This year that wasn't possible, so we have decided **to bring Parent Orientation to You.**

Each team will be sharing their Parent Orientation presentations in a digital format. Look out for the notification.



**Proud to be a major sponsor  
of Everglade Primary School.**  
Barfoot & Thompson Manukau

**BARFOOT  
& THOMPSON**  
ESTABLISHED 1988



PLEASE SUPPORT OUR ADVERTISERS WHO ARE SUPPORTING OUR SCHOOL

## Selling your neighbourhood

# BARFOOT & THOMPSON

Manukau 09 262 1305 | [www.barfoot.co.nz](http://www.barfoot.co.nz)



**Cuong Nguyen**  
021 0277 0052  
[c.nguyen@barfoot.co.nz](mailto:c.nguyen@barfoot.co.nz)  
A/H 09 278 6006



**Karen Crockett**  
021 930 711  
[k.crockett@barfoot.co.nz](mailto:k.crockett@barfoot.co.nz)  
A/H 09 263 7512



**Will El-Haddawi**  
021 111 4882  
[w.haddawi@barfoot.co.nz](mailto:w.haddawi@barfoot.co.nz)  
A/H 09 262 1731

**PLUMBERS DRAIN UNBLOCKERS**  
**D.K. PUTT PLUMBING**  
GASFITTERS DRAINAGE  
2006 LTD

**SOUTH & A/H 09 262 3820**  
[www.dkputtplumbing.co.nz](http://www.dkputtplumbing.co.nz) [dkputtplumbing@xtra.co.nz](mailto:dkputtplumbing@xtra.co.nz)  
**PLUMBING - DRAINLAYING - GAS FITTERS - ROOFING**  
Unit 4/5 Jack Conway Ave, Manukau City • PO Box 63105, Manukau City 2241

*Kumon offers individualised Maths and English programmes that help develop strong academic skills in children of all ages with the aim of nurturing confident self-learners.*



Contact: Nimisha Gangoli  
Mobile: 021 172 2060 • Email: [nsgangoli@yahoo.com](mailto:nsgangoli@yahoo.com)  
Address: Everglade Primary School  
64 Everglade Rd, Manukau Heights Auckland 2105

**KUMON**

**KUMON** MANUKAU HEIGHTS EDUCATION CENTRE

*Individualised Maths & English Programmes* →

John Hodgson MDS CCP  
John Muir BDS DOrRCS FDSRCS

## ORTHODONTISTS

We treat children, teenagers and adults using the latest techniques

**58 Great South Road, Papatoetoe, Auckland**  
Tel: 278 5804

Beauty touches mind through heart and soul

**WEEKLY PAYMENTS ACCEPTED**

**MM Millennium Music**  
Quality Lessons • Contemporary Music • Affordable Price  
\*Book now and get a discount

### PLAY KEYBOARD, PIANO, GUITAR AND SINGING

- Music Lessons at affordable price
- Contemporary Music
- Professional Teachers
- Weekly Payments Accepted

33 Station Road, Manurewa • P. 266 7270  
Level One, 268 Great South Rd, Otahuhu • P. 276 2362

[www.millenniumpmusic.co.nz](http://www.millenniumpmusic.co.nz)

**EVERGLADE 4 SQUARE**  
Proud to support  
Everglade School Community  
1/70 Everglade drive, Manukau  
Ph. 09 263 4188  
[www.foursquare.co.nz](http://www.foursquare.co.nz)

### EVERGLADE KIDZ CLUB

BEFORE & AFTER SCHOOL CARE  
ESTABLISHED SINCE 2002  
LOCATED WITHIN EVERGLADE PRIMARY SCHOOL

- On site (next to the courts)
- Opening Hours are 7:00-8:30am & 3:00-6:00pm
- Safe and caring environment
- Fully experienced staff
- Homework time
- Afternoon tea provided
- Indoor activities
- Outdoor activities
- Pick up from classrooms (new entrants)
- Oscar approved programme
- WINZS subsidies

Centre - 09 263 9090  
Centre Mob - 027 4455138

For more information on fees and to obtain an Enrolment pack- please call the centre Co-ordinator Mrs Brenda Smith  
Office - 09 536 4314 or Mobile- 027 285 5326  
Email- [everglade@kidzclub.co.nz](mailto:everglade@kidzclub.co.nz)  
Website- [Kidzclubnz.com](http://Kidzclubnz.com)

Kidz Club New Zealand Ltd  
PO Box 128 Whitford  
2149

## RENTALS

You own the property,  
we will own the hassles.  
Your investment is  
our priority.

Manukau 09 363 1333  
[manukau.rental@barfoot.co.nz](mailto:manukau.rental@barfoot.co.nz)

24 Cavendish Dr,  
Manukau Auckland  
[www.barfoot.co.nz](http://www.barfoot.co.nz)

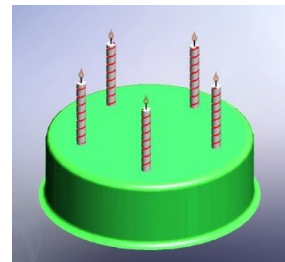
# BARFOOT & THOMPSON

Term Two is not that far away. As always, we will be enrolling children who turn five and start school for the first time. We try to make this process as smooth as possible for new entrants and families; we call the process **Transition to School**.

Coming up soon, we will be running **Transition to School sessions** for children and parents who will be turning five, and starting school in the second term. These are important opportunities for children and parents to prepare well for the upcoming move to school.

If you have a child turning five **between mid-April and early July**, please contact the office to let us know more, and get invited to the Transition sessions.

You can get us on 262 0244 or [office@everglade.school.nz](mailto:office@everglade.school.nz)



**If you have friends or neighbours who have a child turning five years old soon, please encourage them to get in touch.**

**We really want every new pupil to experience the Transition process.**

Coming up even sooner is the **Easter weekend**. Please read below for the details regarding school over this time:

- Friday 02 April (Good Friday) - school is closed (Public Holiday)
- Monday 05 April (Easter Monday) - school is closed (Public Holiday)
- Tuesday 06 April - school is closed (Schools are required to be closed on Easter Tuesday)
- Wednesday 07 April - school is closed (Teacher Only Day postponed from 12 March due to Covid 19)

So our pupils will head home on Thursday 01 April, and not return until Thursday 08 April.

## **A couple of general reminders**

### **Sunhats**

The sunsmart season continues until the end of Term One. Pupils should have a recognised sunhat when in outside areas between 10.55am and 3.00 pm.

### **Road Safety**

We thank the vast majority of our parents who make sure their **children cross Everglade Drive at the pedestrian crossing**. It is so vital that children learn that this is the safe way to cross, and it is important that they are not taught to just duck across the road when Mum or Dad call them. It takes an extra minute or two, but it is worth it.



We think it's important to address any issues or concerns at an early stage. This makes things much easier to resolve. The layout below shows how we go about this.

**WHO DO I CONTACT IN  
2021?**

Please use the following table to check who your first contact should be when you have a concern about your child.

If your concern is about .....	Please contact...
A Classroom Matter	Your child's teacher
An unresolved Classroom Matter	See below
Attendance Matters	Any one of: Mrs Powrie Mrs Roberts Mr Robinson Mrs Naidoo
Playground Behaviour Matters	
Student Welfare (Pastoral Care) Matters	
Special Needs or Educational Programme Support	
School Operations and Policy Matters*	Mr Robinson*

If you have discussed a classroom matter with your child's teacher, and you feel it has not been resolved or concluded, please ask at the office to speak with either:

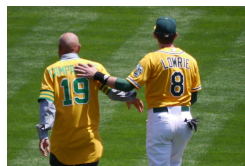
One of the Deputy Principals, Mrs Roberts or Mrs Powrie

or the Principal, Mr Robinson

Whoever is available will then meet with you

Note also: if Mr Robinson is not available to discuss your queries re Operations or Policy\*, one of the other named people will take their place. They will then share the matter with Mr Robinson, who will take things forward and come back to you.

**THANK YOU**



Please also note that we are more than happy to hear good news about your child's school learning and experience.

Don't save all your communication for the bad news! A pat on the back is always a good thing.



## Pita Pit this Friday!

Go to [www.ezlunch.co.nz](http://www.ezlunch.co.nz)

Click create an account and fill in your details.

Click Student buttons to add items to the cart

Click the calendar icon to order multiple dates



Next newsletter: Wednesday 24 March

Regards

A handwritten signature in blue ink that reads 'John Robinson'.

**John Robinson**  
**Principal**