



EVERGLADE SCHOOL NEWSLETTER

64 Everglade Drive, Manukau 2105
Phone: (09) 262 0244 • Fax: (09) 262 3791
E-mail: office@everglade.school.nz



Wednesday 02 June 2021

12/2021

Dear Parents/Caregivers,

As we approach the coming weekend, please be reminded of two vital dates:

- This Friday 04 June is a Teacher Only Day - school is closed
- Next Monday 07 June is the Queen's Birthday public holiday - school is closed



**Proud to be a major sponsor
of Everglade Primary School.**
Barfoot & Thompson Manukau

**BARFOOT
& THOMPSON**
ESTABLISHED 1988

PLEASE SUPPORT OUR ADVERTISERS WHO ARE SUPPORTING OUR SCHOOL

Selling your neighbourhood

BARFOOT THOMPSON &
LICENSED REAA 2008

Manukau 09 262 1305 | www.barfoot.co.nz



Cuong Nguyen

021 0277 0052

c.nguyen@barfoot.co.nz

A/H 09 278 6006



Karen Crockett

021 930 711

k.crockett@barfoot.co.nz

A/H 09 263 7512



Will El-Haddawi

021 111 4882

w.haddawi@barfoot.co.nz

A/H 09 262 1731

PLUMBERS DRAIN UNBLOCKERS
D.K. PUTT PLUMBING 2006 LTD
GASFITTERS DRAINAGE

SOUTH & A/H 09 262 3820
www.dkputtplumbing.co.nz dkputtplumbing@xtra.co.nz
PLUMBING - DRAINLAYING - GAS FITTERS - ROOFING
Unit 4/5 Jack Conway Ave, Manukau City • PO Box 63105, Manukau City 2241

Kumon offers individualised Maths and English programmes that help develop strong academic skills in children of all ages with the aim of nurturing confident self-learners.



Contact: Nimisha Gangoli

Mobile: 021 172 2060 • Email: nsgangoli@yahoo.com

Address: Everglade Primary School

64 Everglade Rd, Manukau Heights Auckland 2105

KUMON

KUMON MANUKAU HEIGHTS EDUCATION CENTRE

Individualised Maths & English Programmes ➔

WEEKLY PAYMENTS ACCEPTED

MM MillenniumMusic
Quality Lessons • Contemporary Music • Affordable Price
*Book now and get a discount

PLAY KEYBOARD, PIANO, GUITAR AND SINGING

- Music Lessons at affordable price
- Professional Teachers
- Contemporary Music
- Weekly Payments Accepted

33 Station Road, Manurewa • P. 266 7270
Level One, 268 Great South Rd, Otahuhu • P. 276 2362
www.millenniummusic.co.nz

Everglade 4 Square
Proud to support
Everglade School Community
1/70 Everglade drive, Manukau
Ph. 09 263 4188
www.foursquare.co.nz

EVERGLADE KIDZ CLUB
BEFORE & AFTER SCHOOL CARE
ESTABLISHED SINCE 2002
LOCATED WITHIN EVERGLADE PRIMARY SCHOOL

- On site (next to the courts)
- Opening Hours are 7:00-8:30am & 3:00-6:00pm
- Safe and caring environment
- Fully experienced staff
- Homework time
- Afternoon tea provided
- Indoor activities
- Outdoor activities
- Pick up from classrooms (new entrants)
- Oscar approved programme
- WINZS subsidies

Centre - 09 263 9090
Centre Mob - 027 4455138

For more information on fees and to obtain an Enrolment pack- please call the centre Co-ordinator Mrs Brenda Smith
Office - 09 536 4314 or Mobile- 027 285 5326
Email- everglade@kidzclub.co.nz
Website- Kidzclubnz.com
Kidz Club New Zealand Ltd
PO Box 128 Whitford
2149

KIDZCLUB NEW ZEALAND LTD

RENTALS

**You own the property,
we will own the hassles.
Your investment is
our priority.**

Manukau 09 363 1333
manukau.rental@barfoot.co.nz

24 Cavendish Dr,
Manukau Auckland
www.barfoot.co.nz

BARFOOT THOMPSON &
LICENSED REAA 2008

Thon '21 is almost upon us!!!

If you haven't already done so, tomorrow is the day for **all sponsor cards to be returned**.

Straight after Queens' Birthday Weekend, Thon Testing will take place. We will then enter each pupil's score on their sponsor card, and return it to them for collecting their sponsor money.

It's important for every child's sponsor card to be accurate, and to be signed by the teacher who tested the child. This shows your sponsors that everything has been done correctly.

Please keep encouraging your child to learn their answers, and to sign up as many sponsors as possible.

If sponsor cards or learning sheets have been lost, new copies are available from the school office.

More about the gates!!

Last week we reminded you that our two vehicle gates at the front entrance are on an automatic timer.

They close from 8.30-9.00am, and from 2.50-3.15pm.

If you come into the school car park close to these times, you will need to move quickly. Once the gates are closed, we may not be able to get you out before the timer allows.



Please note as well that **when the gates are closed, it is still illegal to park in front of them**, even for the short time needed to drop off children. If you do stop in front of the closed gates, or in the bus stop, or in any other illegal ways, there is a chance that you will be ticketed.

Well done twice!

In recent weeks two groups of pupils have represented the school at interschool days. Some students represented the school at both events.

Two football teams took part in the Zone Football Tournament on Thursday 20 May, held at McLennan Park.

Then on Tuesday 25 May our school hosted the South Auckland Chess Tournament. We entered four teams in this competition.

Congratulations to:

Football - Abigayle Taylor, Achilles Ly, Adit Palanisamy, Alexander Barnett, Ashley Grewal, Bronson Turu, Daiwik Kodakandla, Dan Tubuka, David Tekiteki, Declan Johnson, Denzalle Tupu Tuia, Gavin Singh, Hazel Greenaway, Keanu Collier, Kristian Pal, Manaaki Anderson-Taueki, Marco Fagundes dos Santos, Nikau Kepa, Salman Ahmad, Zachary Harris, Zahra Sheikh and Zaid Ali



On Thursday the 20th of May, 22 of our Pohutukawa (Year 5/6) students attended the MPSSA football tournament at McLennan Park in Papakura.

They went up against 24 other schools, each team playing 6 games.

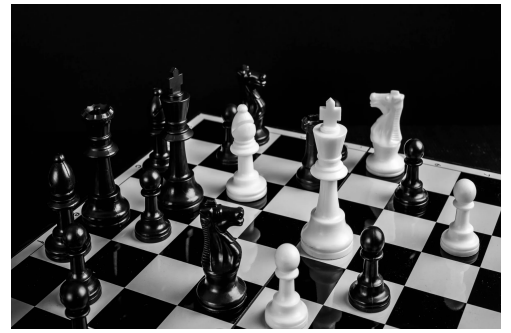
They played with enthusiasm, displayed excellent sportsmanship, and finished off overall in 4th place.

Congratulations to all those who participated and the teams coach, Mr Robinson.

Player of the day was **Bronson Turu**.

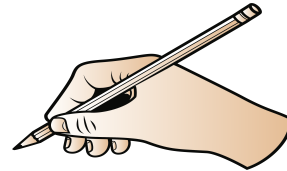


Chess - Aarush Singh, Armaan Faruk, Ashley Grewal, Cindy Haddad, Eden Bester, Israel Purcell, Khushi Mandalia, Marco Fagundes dos Santos, Nikatai Mahutu, Rishav Bansal, Ryan Nu'uola, Samantha Read, Sean Teaukura, Srirama Nimmakayala, Suhana Narayan, Taita Mana'o and Vihaan Chowdavarapu



Writers' Piece

We thank Room 4 for this contribution to our newsletter.



In Room 4 we have been learning to use full stops in our sentences. We wrote about Shells.



Some shells have different shapes. They also have different colours. They are bumpy on top. It is smooth under the shell. If you scratch the shell, it can make squeaky noises.

By Grace Chhabra

There are different colours on the shells. The shells keep the animal safe. My shell looks like a plate.

By Vivaan Kumar

Some shells have patterns. Sea animals have shells on their backs. Shells are different colours. Shells are on the beach. When I find a shell, I feel happy.

By Vivienne Nguyen

There are different types of shells. There are patterns on the shells. We find shells at the beach. The shells are hard.

By Kairos Pauta

Next newsletter: Wednesday 09 June

Regards

A handwritten signature in blue ink, appearing to read "John Robinson", is displayed on a light yellow rectangular background.

John Robinson
Principal