



EVERGLADE SCHOOL NEWSLETTER

64 Everglade Drive, Manukau 2105
Phone: (09) 262 0244 • Fax: (09) 262 3791
E-mail: office@everglade.school.nz



Wednesday 11 August 2021

20/2021

Dear Parents/Caregivers,

In the first newsletter of this term, I made mention of the need for a bit of a 'tidy up' with some parts of our school uniform. In particular, I mentioned socks/tights and jerseys/jackets.

Over the last couple of weeks, it has been really pleasing to see how few examples of non-uniform clothing were being worn.

We know there will always be the odd situation where a pupil can't wear proper uniform. This is usually around such things as the washing not getting dry, or some sort of misfortune at home. We understand this, and don't make a fuss about it. These situations are usually only for one day, maybe two. For us, it's more about making sure that there are no long term situations with non-uniform clothing.

So from us at school, thank you for the effort you do put in to ensure your child is correctly dressed, and ready to go at school each day.



**Proud to be a major sponsor
of Everglade Primary School.**
Barfoot & Thompson Manukau

**BARFOOT
& THOMPSON**
ESTABLISHED 1988

PLEASE SUPPORT OUR ADVERTISERS WHO ARE SUPPORTING OUR SCHOOL

Selling your neighbourhood

**BARFOOT
THOMPSON &**

Manukau 09 262 1305 | www.barfoot.co.nz



Karen Crockett
021 930 711
k.crockett@barfoot.co.nz
A/H 09 263 7512



Will El-Haddawi
021 111 4882
w.haddawi@barfoot.co.nz
A/H 09 262 1731

PLUMBERS DRAIN UNBLOCKERS
D.K. PUTT PLUMBING
GASFITTERS DRAINAGE
2006 LTD

SOUTH & A/H 09 262 3820
www.dkputtplumbing.co.nz dkputtplumbing@xtra.co.nz
PLUMBING - DRAINLAYING - GAS FITTERS - ROOFING
Unit 4/5 Jack Conway Ave, Manukau City • PO Box 63105, Manukau City 2241

John Hodgson MDS CCP
John Muir BDS DORCS FDSRCS

ORTHODONTISTS

We treat children, teenagers and adults using the latest techniques

58 Great South Road, Papatoetoe, Auckland
Tel: 278 5804

Beauty touches mind through heart and soul

EVERGLADE KIDZ CLUB

BEFORE & AFTER SCHOOL CARE
ESTABLISHED SINCE 2002
LOCATED WITHIN EVERGLADE PRIMARY SCHOOL
• On site (next to the courts)
• Opening Hours are 7:00-8:30am and 3:00-6:00pm
• Safe and caring environment
• Fully experienced staff
• Homework time
• Afternoon tea provided
• Indoor activities
• Outdoor activities
• Pick up from classrooms (new entrants)
• Oscar approved programme • WINZS subsidy
Centre - 09 263 9090
Centre Mob - 027 4455138

For more information on fees and to obtain an Enrolment pack - please call the centre Co-ordinator
Mrs Brenda Smith
Mobile: 027 285 5326
Email: everglade@kidzclub.co.nz
Website: Kidzclubnz.com

Kidz Club New Zealand Ltd
PO Box 128 Whitford
2149



Dr Anae Neru Leavasa

MP for Takanini

If you require advocacy, information or support please contact me

Takanini Office
takanini.mp@parliament.govt.nz | 0800 997 527
317 Great South Road, Takanini 2112
/DrAnaeNeruLeavasa

Authorised by Dr Anae Neru Leavasa MP,
Parliament Buildings, Wellington



Labour



Everglade 4 Square

Proud to support
Everglade School Community

1/70 Everglade drive, Manukau
Ph. 09 263 4188
www.foursquare.co.nz

RENTALS

You own the property,
we will own the hassles.
Your investment is
our priority.

Manukau 09 363 1333
manukau.rental@barfoot.co.nz

24 Cavendish Dr,
Manukau Auckland
www.barfoot.co.nz

**BARFOOT
THOMPSON &**

Kumon offers individualised Maths and English programmes that help develop strong academic skills in children of all ages with the aim of nurturing confident self-learners.



Contact: Nimisha Gangoli
Mobile: 021 172 2060 • Email: nsgangoli@yahoo.com
Address: Everglade Primary School
64 Everglade Rd, Manukau Heights Auckland 2105

KUMON

KUMON MANUKAU HEIGHTS EDUCATION CENTRE

Individualised Maths & English Programmes →

To advertise on this newsletter and support the school, please contact Newsletters Unlimited, Ph/Fax: 09 817 3867, or Email: newsletters@xtra.co.nz

Teacher Only Day coming up

Please note that

Friday 20 August is a Teacher Only Day.

School will be closed on that day



Coming up on 31 August, we have our **final Visiting Performer event for the year**. These are the shows presented to our classes by professional performers in dance, drama, storytelling etc. The **\$24 Visiting Performer charge** that most parents paid at the start of the year (less if you enrolled later) covers your child's attendance.

A bit closer to the event, we will send out details. Those parents who took the 'Pay as you go' option will be able to decide if they want their child to attend.

This term's **BIG EVENT** is the **2021 EVERGLADE SCHOOL ART EXPO**. This will be a spectacular display of art work from every pupil in the school.

We have given the Art Expo a title and logo, which you can see below



There will be four viewings of our 'Once Upon a Time' presentation. These are to be held on:

- ★ Tuesday 21 September 3.15-4.30pm
- ★ Tuesday 21 September 6.30-8.00pm
- ★ Wednesday 22 September 3.15-4.30pm
- ★ Wednesday 22 September 6.30-8.00pm

More details to come soon. Make sure you keep one of these dates & times free.

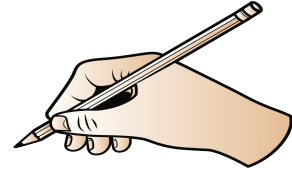


Our Year 5 & 6 Mathex Team competed today in the Manurewa Mathex competition. They competed against ten other schools to achieve third place (just one point behind 1st & 2nd) Congratulations to Kritheesh Gopalakrishnan, Abigayle Taylor, Christina Tuifua, Israel Purcell.



Writers' Piece

Room 15 presents this edition of student writing.



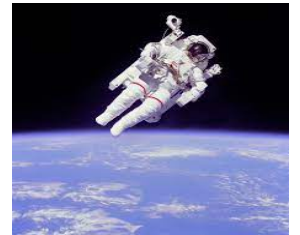
The International Space Station is the biggest object in space and astronauts can live on it. Earth is the only planet that has life. Do you know why? This is because it has water so it can bring life everywhere. Earth is home to us and it is home to every living thing on it. On Earth, gravity pushes things down but in space things float away.

By Alisha Kadam



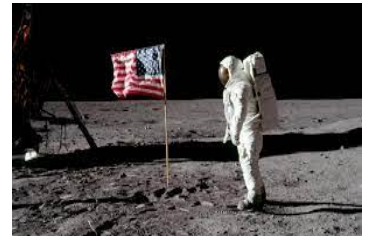
When astronauts go to space, there is no gravity so the astronauts are floating. The eight planets are called Mercury, Venus, Earth, Mars, Jupiter, Saturn, Uranus and Neptune. We live on Earth. When you eat or drink in space, food and drink start floating away.

By Nathan Candy



Long ago, Neil Armstrong went to the moon and put an American flag on top of it. Mercury is the closest planet to the sun. It is the hottest because it is near the sun. Mars is the red planet. It has a lot of dust and rocks. Jupiter is white and it is the biggest planet. Saturn is a ringed planet.

By Khamali Tourangi



Sushi Friday

You can order (or cancel) any time before 9am on the day or schedule in advance. Your sushi lunch will be delivered to school in time for lunch.

Click [here](#) to view the menu.

Orders are made online through your myKindo account. One account for the whole family! Get started now and be ready... [Click here](#) or go to www.mykindo.co.nz to start ordering!



Next newsletter: Wednesday 18 August

Regards

A handwritten signature in blue ink, reading "John Robinson". The signature is written in a cursive style with a large initial "J" and a long horizontal stroke at the end.

John Robinson
Principal