



EVERGLADE SCHOOL NEWSLETTER

64 Everglade Drive, Manukau 2105
Phone: (09) 262 0244 • Fax: (09) 262 3791
E-mail: office@everglade.school.nz

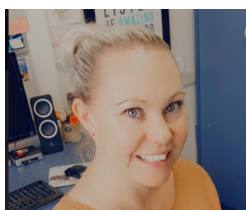


Wednesday 29 March 2023

07/2023

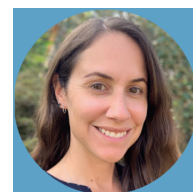
Greetings to Everglade families.

Term One will end on Thursday 06 April. This will also be the last day at Everglade School for Mrs Powrie, one of our Deputy Principals. Mrs Powrie will start her new position as Principal at Karaka School at the beginning of Term Two.



Anna Powrie has been at Everglade School for a little over fourteen years. She was a Team Leader in Year 5&6, then in Year 3 for a total of eight years. In the last six years she has been one of two Deputy Principals. Anna has made a tremendous contribution to Everglade School and its people in her time here, and we wish her well in the next stage of her career. Farewell and best wishes, Anna.

Our new incoming Deputy Principal is Mrs Claudine Heale, who comes to us from Ormiston Primary School. We look forward to getting her settled in her new role, and are confident that she will make her mark on Everglade School in the same way that Anna Powrie has done. Welcome to you, Claudine!



**Proud to be a major sponsor
of Everglade Primary School.**
Barfoot & Thompson Manukau

**BARFOOT
THOMPSON &**
LICENSED REAA 2008

PLEASE SUPPORT OUR ADVERTISERS WHO ARE SUPPORTING OUR SCHOOL

Selling your neighbourhood

**BARFOOT
THOMPSON &**
Licensed REAA 2008

Manukau 09 262 1305 | www.barfoot.co.nz



Karen Crockett
021 930 711
k.crockett@barfoot.co.nz
A/H 09 263 7512



Will El-Haddawi
021 111 4882
w.haddawi@barfoot.co.nz
A/H 09 262 1731

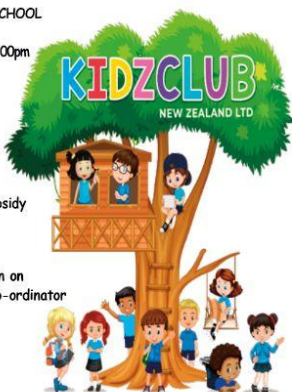
EVERGLADE KIDZ CLUB

BEFORE & AFTER SCHOOL CARE
ESTABLISHED SINCE 2002
LOCATED WITHIN EVERGLADE PRIMARY SCHOOL

- On site (next to the courts)
 - Opening Hours are 7:00-8:30am and 3:00-6:00pm
 - Safe and caring environment
 - Fully experienced staff
 - Homework time
 - Afternoon tea provided
 - Indoor activities
 - Outdoor activities
 - Pick up from classrooms (new entrants)
 - Oscar approved programme - WINZS subsidy
- Centre - 09 263 9090
Centre Mob - 027 298 8983

For more information on fees and to obtain on
Enrolment pack - please call the centre Co-ordinator
Mrs Brenda Smith
Mobile: 027 285 5326
Email: everglade@kidzclub.co.nz
Website: Kidzclubnz.com

Kidz Club New Zealand Ltd
PO Box 128 Whitford
2149



Everglade 4 Square

Proud to support
Everglade School Community
1/70 Everglade drive, Manukau
Call Kharag Singh on Ph. 09 263 4188
www.foursquare.co.nz

Dr Anae Neru Leavasa MP for Takanini

If you require advocacy, information
or support please contact me

Takanini Office
takanini.mp@parliament.govt.nz | 0800 997 527
317 Great South Road, Takanini 2112
📞 /DrAnaeNeruLeavasa

Authorised by Dr Anae Neru Leavasa MP,
Parliament Buildings, Wellington



Nau mai piki mai to your wellbeing General Practice clinic



**\$2* A WEEK
PER HOUSEHOLD**
*Conditions Apply

Our services include covid 19, flu, measles, rubella & mumps Vaccination
We want to offer you the best healthcare. Call our team now.



Whānau Ora Super Clinic
0800 367 942

www.whanauoracommunity.com



**Renovations
Extensions
New Build
Design and build
House Relocation
Subdivision**



Contact Mike to arrange a site assessment 021 172 1505
mike@complexbuilders.co.nz • www.complexbuilders.co.nz

RENTALS

You own the property,
we will own the hassles.
Your investment is
our priority.

Manukau 09 363 1333
manukau.rental@barfoot.co.nz

24 Cavendish Dr,
Manukau Auckland
www.barfoot.co.nz

**BARFOOT
THOMPSON &**
Licensed REAA 2008

*Kumon offers individualised Maths and
English programmes that help develop strong
academic skills in children of all ages with
the aim of nurturing confident self-learners.*



Contact: Nimisha Gangoli
Mobile: 021 172 2060 • Email: nsgangoli@yahoo.com
Address: Everglade Primary School
64 Everglade Rd, Manukau Heights Auckland 2105

KUMON

KUMON MANUKAU HEIGHTS EDUCATION CENTRE

Individualised Maths & English Programmes ➔

To advertise on this newsletter and support the school, please contact Newsletters Unlimited, Ph/Fax: 09 817 3867, or Email: newsletters@xtra.co.nz

As mentioned earlier, **Term One ends on Thursday 06 April**. Classes will finish at the normal time of 3.00pm

New entrants starting in Term Two

Yesterday we held our first Transition Morning for pupils and parents where the child will turn five and start school next term. The second Transition Morning is on **Wednesday 05 April, from 9.15 to 10.45am**.

If you have a child turning five before 30 June, and you live in the school zone, please get in touch with us. You can complete the enrolment form via our website www.everglade.school.nz and we will get you on board.

If you have a neighbour with an upcoming five year old, please check in with them.

School Assembly

Our next School Assembly is on **Wednesday 05 April at 1.45pm**. All are welcome.

Parking in the school grounds

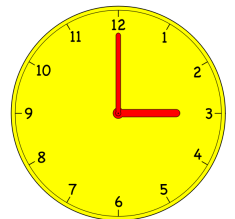
If you drop your child off in the car park every morning, this can work fine. However, if you decide to park your car, then go with your child to talk to their teacher, you may get back to your car and find the vehicle gates are closed.



The vehicle gates close at 8.30am each morning. If you get caught inside, do not expect someone to open the gates for you. The times are clearly shown on our signage (which has been there for years) so there is no reason to be surprised.

If you are taking your child to school in the morning, and need to talk to their teacher, it makes sense to park on the road and walk in. A couple of extra minutes walking may save 15-20 minutes of waiting for a gate to open.

Staying with the 'time' theme, please note that **DAYLIGHT SAVING TIME ENDS THIS WEEKEND**. Clocks should be put back one hour before 3.00am on Sunday morning.



Open Day at Vector Wero Whitewater Park - FREE EVENT



**FREE AQUATIC ACTIVITIES
HAVE A GO DAY**

APRIL 1, 10AM - 4PM

**RAFTING, KAYAKING, STAND UP PADDLE BOARD,
RAFTING, BOMBING COMP, MULTIBALL, HUNGER
BALL, FOOD TRUCKS.**

**ACTIVITIES FOR ALL AGES AND ABILITY, NBL
BULLS AUTOGRAPH SIGNING, SPOT PRIZES.**

**WERO WHITEWATER PARK,
770 GREAT SOUTH ROAD, AUCKLAND**

Global Water Safety &
Drowning Prevention
Rotary
Club 

Next newsletter: Wednesday 05 April

Regards



**John Robinson
Principal**